

8  
The Year's **BIGGEST** Step Forward

# MOTOR TREND



MAY 1956 25c

MT presents its automotive award to the car manufacturer making the most significant advancement of 1956

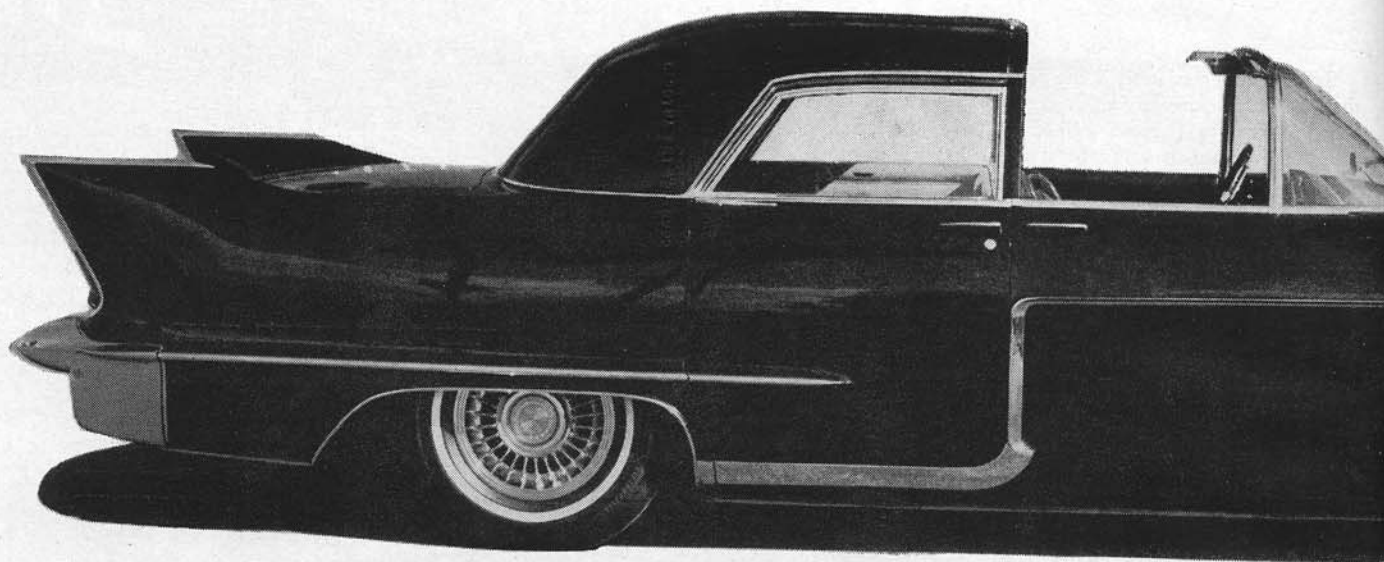
ROAD TESTS: **CHRYSLER**  
**PONTIAC**

**Road Test**  
**HOW DOES**  
**VOLKSWAGEN**  
**COMPARE?**

**ANALYZING**  
**THE GROWING**  
**VOLKSWAGEN**  
**FAMILY**



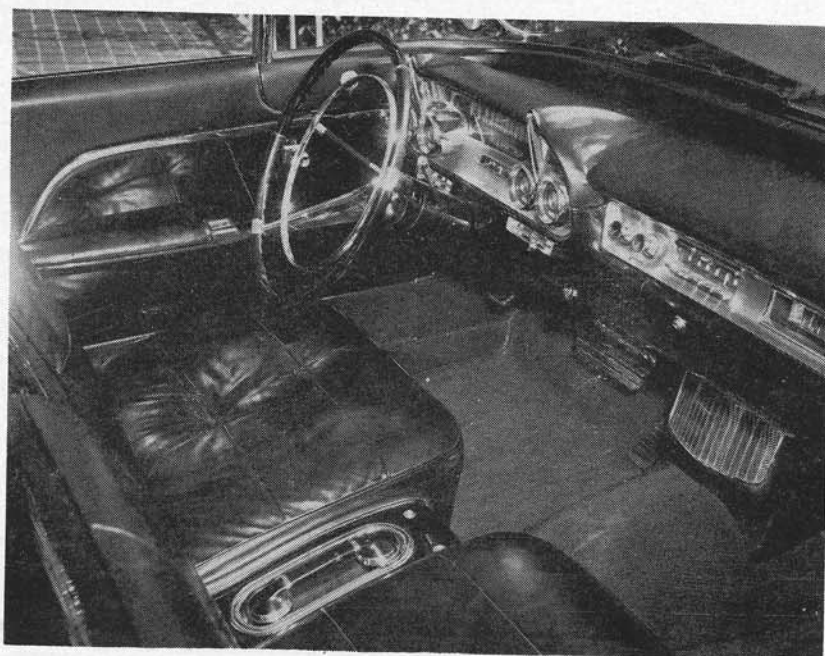
# THE RETURN OF THE



Cadillac Eldorado Brougham Town Car

**I**T'S HARD TO IMAGINE that the unlovely Lincoln town car opposite once surrounded its concealed owner with the ultimate in prestige. The Rolls is easier for us to understand, especially when compared with the Cadillac Eldorado version from this year's Motorama. Both are quietly flamboyant (we'd like to see the Cad with a little of that crazy canework) and both use a huge chassis to transport a minute and secluded passenger compartment. The 220-inch Eldorado bristles with gilded-cage goodies from its quad headlights to the beige privacy of the

rear. Here a bar, cigar humidor, radio-telephone, vanity case and air conditioning are kept secure with a complex locking system. You press a microswitch to make the door swing open, but if the transmission is in DRIVE you have to override the electronic lock mechanically (what a strain!). Once you're out, you can seal all doors and windows with a key inserted in one rear door lock. And, if you're the driver, an automatic button releases when you arise from your sable-hued seat to prevent the embarrassment of locking yourself—and your boss—out. *(Continued)*



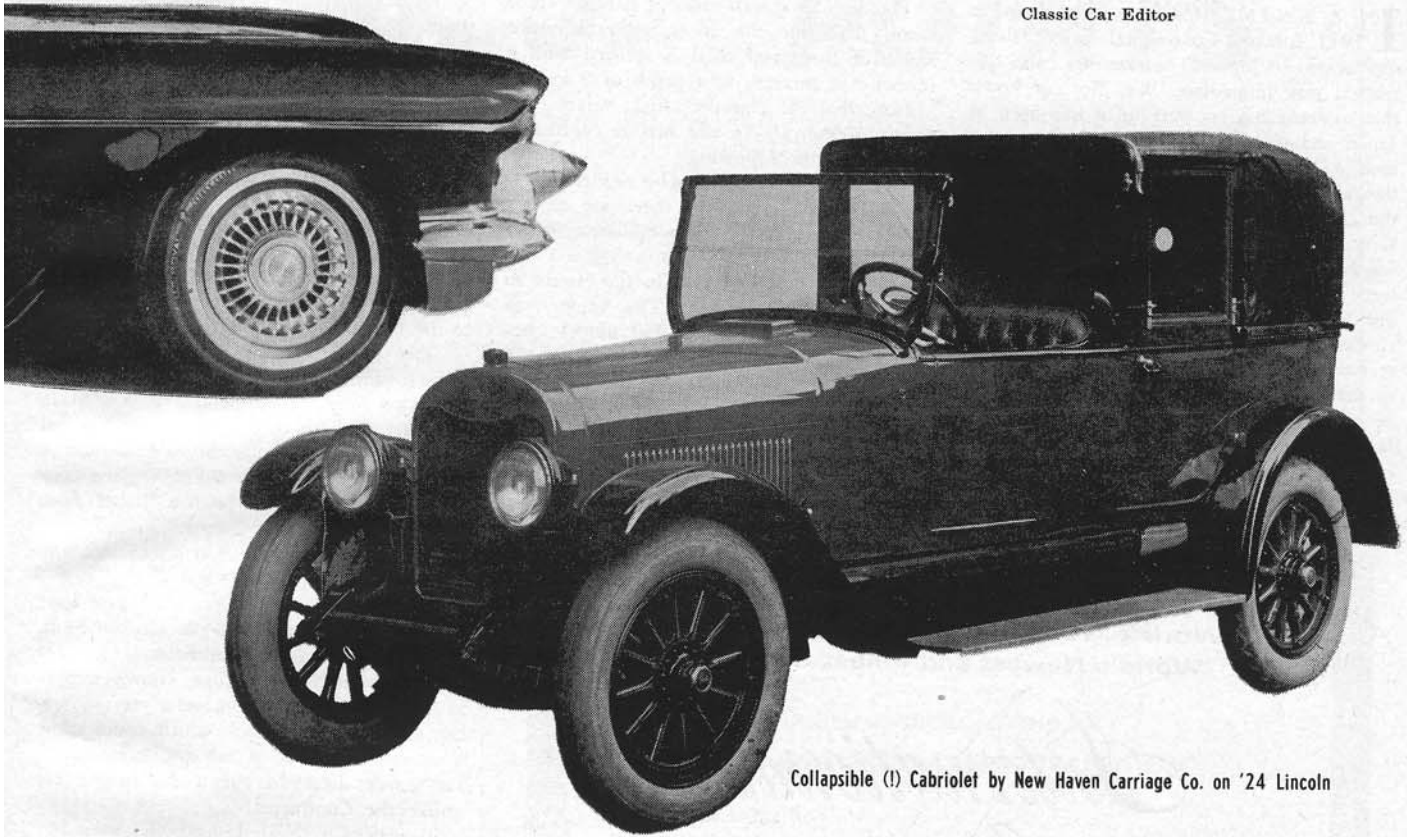
Black leather and Fiberglas, phone to master's quarters, sunken-hub wheel are for chauffeur



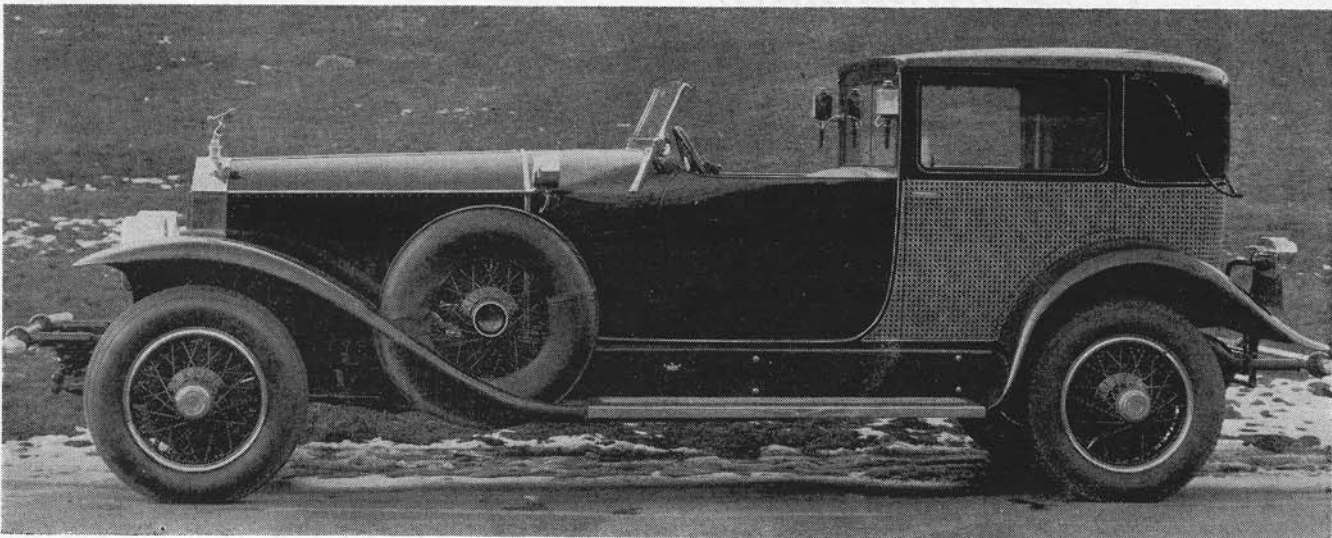
Beige leather and broadcloth garnish this electronic portal

# Town Car

by Robert J. Gottlieb  
Classic Car Editor



Collapsible (!) Cabriolet by New Haven Carriage Co. on '24 Lincoln



COURTESY AUTOMOBILE MANUFACTURERS ASSN.

Rolls-Royce with 2-Passenger Town Brougham Body by Brewster